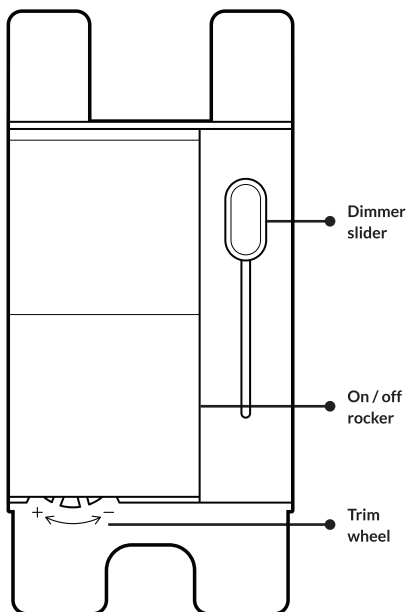
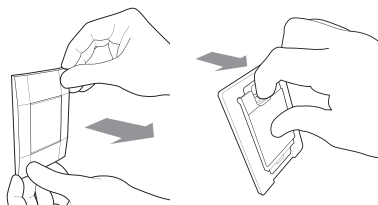


Deako Simple Dimmer



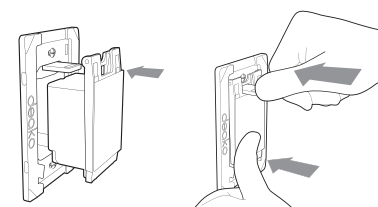
Remove switch



Pull the corner of the faceplate to remove

Pull the blue tab outwards to release the switch

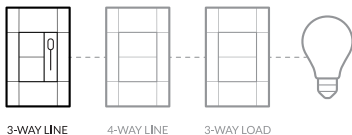
Insert switch



Align the blue tab on the backplate with the top of the switch

While pressing the switch inwards, push in the blue tab

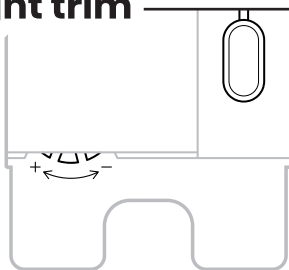
3-way & 4-ways



IMPORTANT

If you're installing a Deako Simple Dimmer in a 3-way or 4-way configuration, it must **only** be installed in the 3-way line location of the circuit.

Light trim



Set the dim slider to the lowest position

Increase dimmable range by spinning the trim wheel to the right until the lowest light level is achieved

Eliminate flicker by spinning the trim wheel to the left until the light stops flickering

Need help?

support.deako.com

1-844-673-3256

Deako Simple Dimmer

LED / MLV / ELV / E-Ballast: 150W
 INC / HAL: 600W (1-gang)
 500W (2-gang)
 400W (3-gang)

CAUTION

To reduce the risk of overheating and possible damage to other equipment, do not install where the marked ampere rating of the Dimmer exceeds the marked ampere rating of the Deako Backplate

deako®

© 2021 Deako
 1-Year Limited Warranty
 Patents: deako.com/pat
 4201 Roosevelt Way NE #100 Seattle, WA 98105, USA