

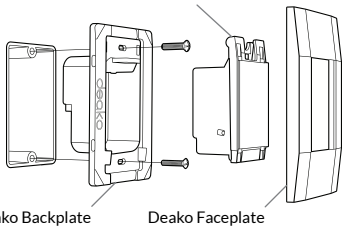
DEAKO SMART SWITCH & SMART DIMMER

INSTALLATION

See full instructions at
DEAKO.COM/INSTALL

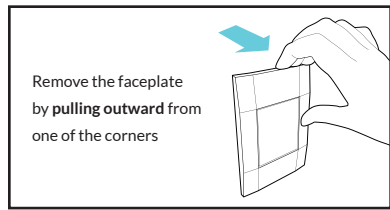
STEP 1 BEFORE YOU START

Deako Smart Product



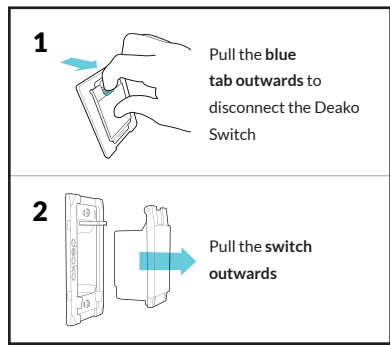
Before continuing, be sure Deako Backplates (sold separately) have been installed and the power is on. Find step-by-step instructions at deako.com/install.

STEP 2 REMOVE FACEPLATE



Remove the faceplate by pulling outward from one of the corners

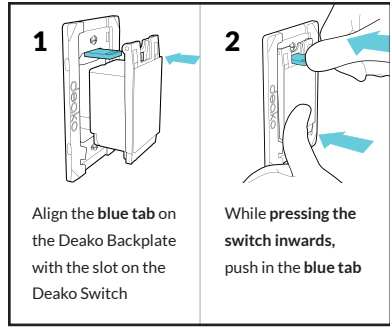
STEP 3 UNINSTALL SWITCH



1 Pull the blue tab outwards to disconnect the Deako Switch

2 Pull the switch outwards

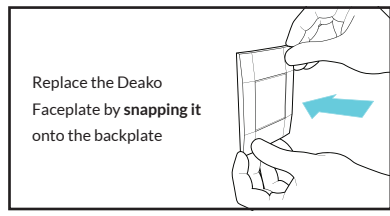
STEP 4 INSTALL NEW SWITCH



1 Align the blue tab on the Deako Backplate with the slot on the Deako Switch

2 While pressing the switch inwards, push in the blue tab

STEP 5 REPLACE FACEPLATE



Replace the Deako Faceplate by snapping it onto the backplate

STEP 6 FINISHING UP

IMPORTANT

Is there more than one switch controlling this light? Continue to **Linking: 3-way & 4-way** before pairing to the app.

Is this light controlled by a single switch? If so, you're all set! Download the Deako App to begin customizing your home.



Having trouble? We're here to help!

For more step-by-step instructions, support, videos and more, go to support.deako.com

Or give us a call at 1-844-673-3256

LINKING: 3-WAY & 4-WAY

Deako Switches are single-pole by default. To use them in 3-way or 4-way circuits or as remotes, follow the steps below.

If installing Deako Smart Dimmer, it must only be installed at the load location of the circuit.

- Press & hold one of the switches in the circuit until the switch flashes

If nothing happens after 10s, try the next switch in the circuit
- Put the switch into linking mode by tapping **1** (the icon will begin flashing)
- Repeat steps 1 & 2 for each switch in the circuit
- Confirm that the **1** icon is flashing on every switch in the circuit

Once confirmed, tap **2** on any switch*

Wait for all switches in the circuit to stop flashing (about 30s)

Once all switches stop flashing, linking is complete.

unless linking remotes, then **2 must be tapped on the switch in the load location*

Troubleshooting

If switches continue flashing for more than one minute, there might be a problem. To exit linking mode, press and hold the switch for 6 seconds.

Then **factory reset** each switch in the circuit before retrying.

Now that you're done with installation, download the Deako App to customize your home.



Deako Switch LED Key

- 1** icon flashing, **2** icon on: **Linking mode**
- 1** & **3** icon on: **Configure mode**
- 3** icon on: **Factory reset mode**
- 1**, **2** & **3** icon pulsing: **Pairing mode**

HOW TO ? FACTORY RESET

- Pull the blue tab outwards to disconnect the Deako Switch
- While pressing the switch inwards, push in the blue tab (keep holding the switch)
- Continue holding the switch until **3** appears
- To factory reset, tap **3** then **2** then **1** in order and wait for the icons to stop flashing (about 30 seconds)

Pro tip

Factory reset a switch by plugging it into a single-pole backplate.