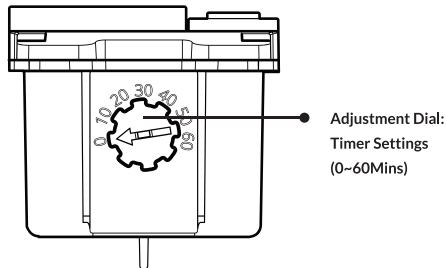
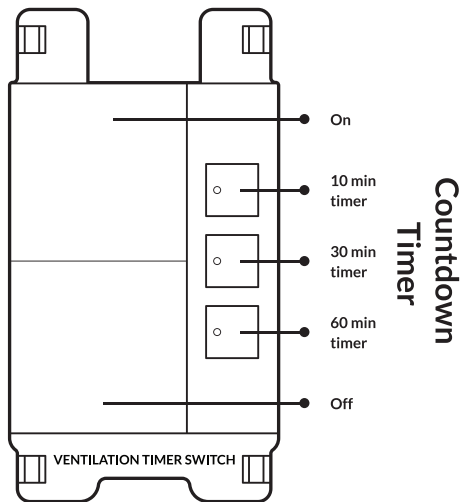
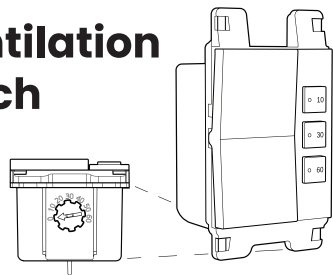


Deako Simple Ventilation Timer Switch Single Pole



Features

- Three (3) timer buttons and an Off/On Switch
- Each timer button has an adjacent white LED to indicate the current countdown time
- Adjustable ventilation timer to ensure proper bathroom ventilation, expelling stale air to improve indoor air quality
- Designed to meet ASHRAE 62.2 and CalGreen Title 24 codes for continuous ventilation*
- When turned on the timer defaults to last time used
- Manual OFF Override

* When used with ASHRAE 62.2 compliant fans

Changing the Ventilation Timer Settings

The Simple Ventilation Timer Switch comes with the Countdown Timer defaulted to 30 minutes and the Ventilation Timer set to 0 minutes. To change the Ventilation timer setting, locate the adjustment dial on the side of the switch and adjust the dial. Follow the instructions to remove the switch if the switch is already installed.



The dial can be set between 0-60 minutes. The new time setting will take effect immediately once the switch is installed or reinstalled in the backplate.

First Time Use

When the Simple Ventilation Timer Switch is plugged in for the first time, all 3 LEDs will light up.

To turn the Countdown Timer On :

- Press the on toggle or desired time button to turn the load on.
- The first time use default is 30 minutes.
- If you press the on toggle, it will count down from the last time used.
- Corresponding indicator light will light up for the duration of the time selected.

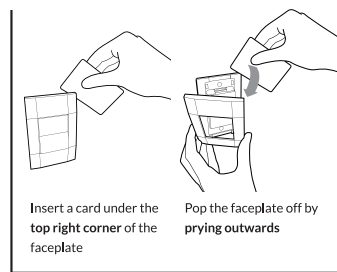
To turn the load off :

- Press the off toggle to turn the load off or wait for the selected timer to run out.

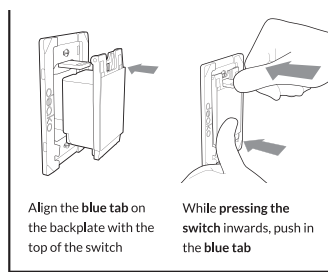
To select different timer :

- Press the button corresponding to the desired time.
- Corresponding indicator light will light up for the duration of the time selected.

Remove switch



Insert switch



Need help?

support.deako.com
1-844-673-3256

Ventilation Timer:

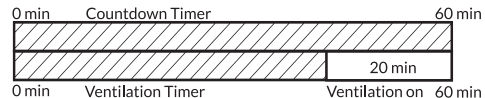
The Ventilation Timer runs for the selected amount of time every hour to help ensure adequate indoor air ventilation.



- Setting the dial to "0" means the Ventilation Timer will never turn on.
- Setting the dial to "60" means the bathroom fan will run continuously.

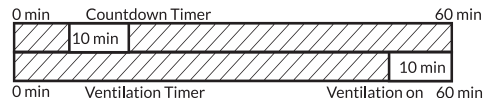
How the Countdown Timer and Ventilation Timer work together:

The Ventilation Timer switch takes into account both independent timers. If for example the ventilation dial is set to 20 minutes/hour, the timer will subtract 20 minutes from 60 minutes and determines its timer needs to come on 40 minutes into the hour and run for the remaining 20 minutes of that hour.



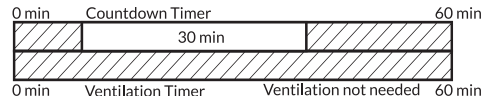
Example 1:

If the countdown timer 10-minute button is pressed when someone uses the bathroom and the timer runs the full 10 minutes, the timer switch will track the 10 minutes of ventilation. The Ventilation Timer switch will subtract the 10 minutes from the required 20 minutes of total ventilation time. 50 minutes into the hour the fan will turn on for 10 additional minutes. Resulting in 20 minutes of total run time that hour.



Example 2:

If the countdown timer 30-minute button is pressed when someone uses the bathroom and the timer runs the full 30 minutes, the timer switch will track the 30 minutes of bathroom use and not turn on the Ventilation Timer for that hour as 30 minutes exceeds the 20 minutes of required ventilation.



NON-MODIFICATION WARNING:

WARNING: Changes or modifications to this device not expressly approved by the manufacturer could void the user's authority to operate the equipment.

CAUTION

To reduce the Risk of Overheating And Possible Damage To Other Equipment, Do Not Install To Control A Receptacle, A Motor-Operated Appliance, A Fluorescent Lighting Fixture, Or A Transformer-Supplied Appliance

Afin de reduire le risque de surchauffe et la possibilite d'endommagement a d'autres materiels, ne pas installer pour commander une prise, un appareil a moteur, une lampe fluorescente ou un appareil alimente par un transformateur

For supply connections use minimum 14 AWG, solid core, copper only wire rated for minimum 90°C.

FCC STATEMENT:

FCC ID: 2AK29-DS0001, 2AK29-DS0002, 2AK29-DS0016

This equipment has been tested and found to comply with the limits for a Class B digital device, pursuant to Part 15 of the FCC Rules. These limits are designed to provide reasonable protection against harmful interference in a residential installation. This equipment generates, uses, and can radiate radio frequency energy and, if not installed and used in accordance with the instructions, may cause harmful interference to radio communications. However, there is no guarantee that interference will no occur in a particular installation. If this equipment does cause harmful interference to radio or television reception, which can be determined by turning the equipment off and on, the user is encouraged to try to correct the interference by one of the following measures:

- Reorient or relocate the receiving antenna.
- Increase the separation between the equipment and receiver.
- Connect the equipment into an outlet on a circuit deferent from that to which the receiver is connected.
- Consult the dealer or an experienced radio/TV technician for help.

OVER TEMPERATURE WARNING

If the timer switch enters an over temperature state all 3 LED's will flash and shut off the switch temporarily, this will protect your switch from possible damage caused by overheat.

If the problem persist please contact deako support.

Simple Ventilation Timer Switch
INPUT: 120V AC 60Hz
MAX: 15A, ½HP
MODEL: DS2016
DS-ST1N-WHWH-UCA
INC/HAL: 800W
LED: 120W

For use with Deako Backplate DS-BP series only.
Dry Locations
Minimum electrical box 14 in³
Purpose of Control: Operating Control

Construction Control: Independently Mounted Control for Flush Mount
Type of Action: Type 1.C.Q
Pollution Degree 2
Impulse Voltage: 2500V
Neutral wire required
cULus Listed TIMERS E482849

deako®

© 2024 Deako, Inc.
1-Year Limited Warranty
Patents: deako.com/pat

4201 Roosevelt Way NE #100 Seattle, WA 98105, USE