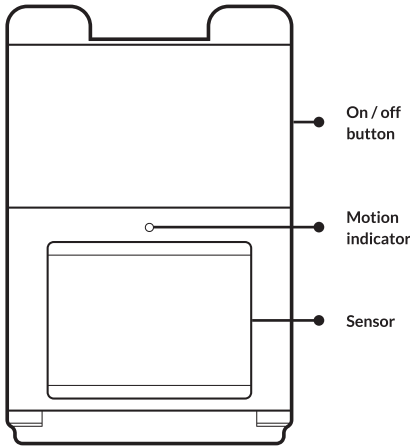
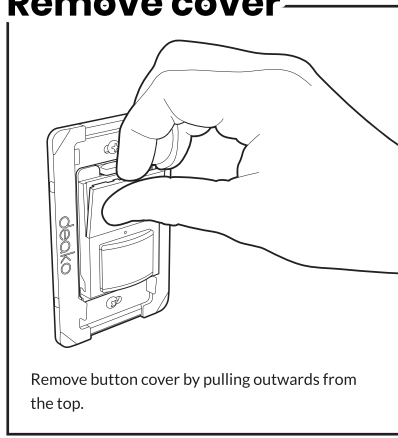


Deako Simple Motion Switch



Remove cover



OCCUPANCY position

Occupancy mode:

Load will automatically turn **on** when motion is detected

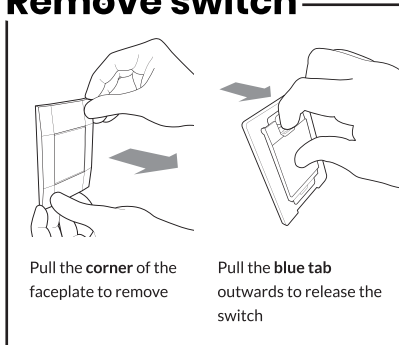
Load will automatically turn **off** when the selected time delay expires

Load can be turned on/off manually by pressing the button

Time delay

Position	Time	Delay
	Test	30 seconds
	10	10 minutes
	20	20 minutes

Remove switch



VACANCY position

Vacancy mode:

Load will **only** turn on when the button is pressed

Load will automatically turn **off** when the selected time delay expires

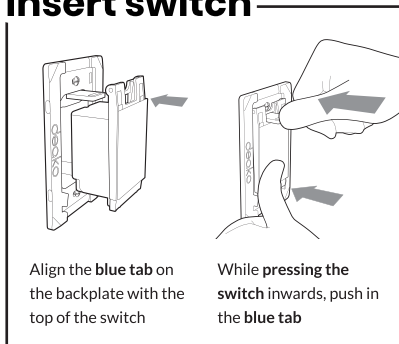
Load can be turned on/off manually by pressing the button

If the time delay has expired and the load turns off, the load will turn on again automatically if motion is detected within 30 seconds

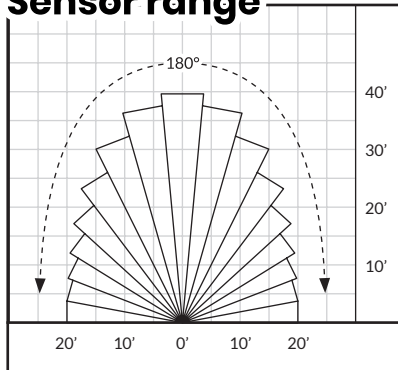
OCC /-VAC mode

Position	Mode	
	OCC	Occupancy mode
	VAC	Vacancy mode

Insert switch



Sensor range



Range

Position	Range	
	LO	Low sensitivity
	HI	High sensitivity

Need help?

support.deako.com

1-844-673-3256



Do not operate for 45 seconds while the switch calibrates

INPUT: 120VAC 60Hz
MAX: 6A 1/6HP
LED / MLV / ELV / E-Ballast: 600W
INC / HAL: 800W
MODEL: DS2004
DS-SM1N-WHWH-UCX

For use with Deako Backplates model DS-BP series only.
Dry location
Minimum electrical box 14 in³

NON-MODIFICATION WARNING:
WARNING: Changes or modifications to this device not expressly approved by the manufacturer could void the user's authority to operate the equipment.

ON / OFF OPERATION
Tap the rectangular switch face to toggle the light on / off.
CAUTION

To Reduce the Risk of Overheating And Possible Damage To Other Equipment, Do Not Install To Control A Receptacle, A Motor-Operated Appliance, A Fluorescent Lighting Fixture, Or A Transformer-Supplied Appliance.
Afin de reduire le risque de surchauffe et la possibilite d'endommagement a d'autres materiels, ne pas installer pour commander une prise, un appareil a moteur, une lampe fluorescente ou un appareil alimente par un transformateur.
For supply connections use minimum 14 AWG, solid core, copper only wire rated for minimum 90°C.

FCC STATEMENT:
FCC ID: 2AK29-DS0001, 2AK29-DS0002

This equipment has been tested and found to comply with the limits for a Class B digital device, pursuant to Part 15 of the FCC Rules. These limits are designed to provide reasonable protection against harmful interference in a residential installation. This equipment generates, uses, and can radiate radio frequency energy and, if not installed and used in accordance with the instructions, may cause harmful interference to radio communications. However, there is no guarantee that interference will not occur in a particular installation. If this equipment does cause harmful interference to radio or television reception, which can be determined by turning the equipment off and on, the user is encouraged to try to correct the interference by one of the following measures:

- Reorient or relocate the receiving antenna.
- Increase the separation between the equipment and receiver.
- Connect the equipment into an outlet on a circuit different from that to which the receiver is connected.
- Consult the dealer or an experienced radio/TV technician for help.

© 2020 Deako

1-Year Limited Warranty

Patents: deako.com/pat

4201 Roosevelt Way NE #100 Seattle, WA 98105, USA

deako®